

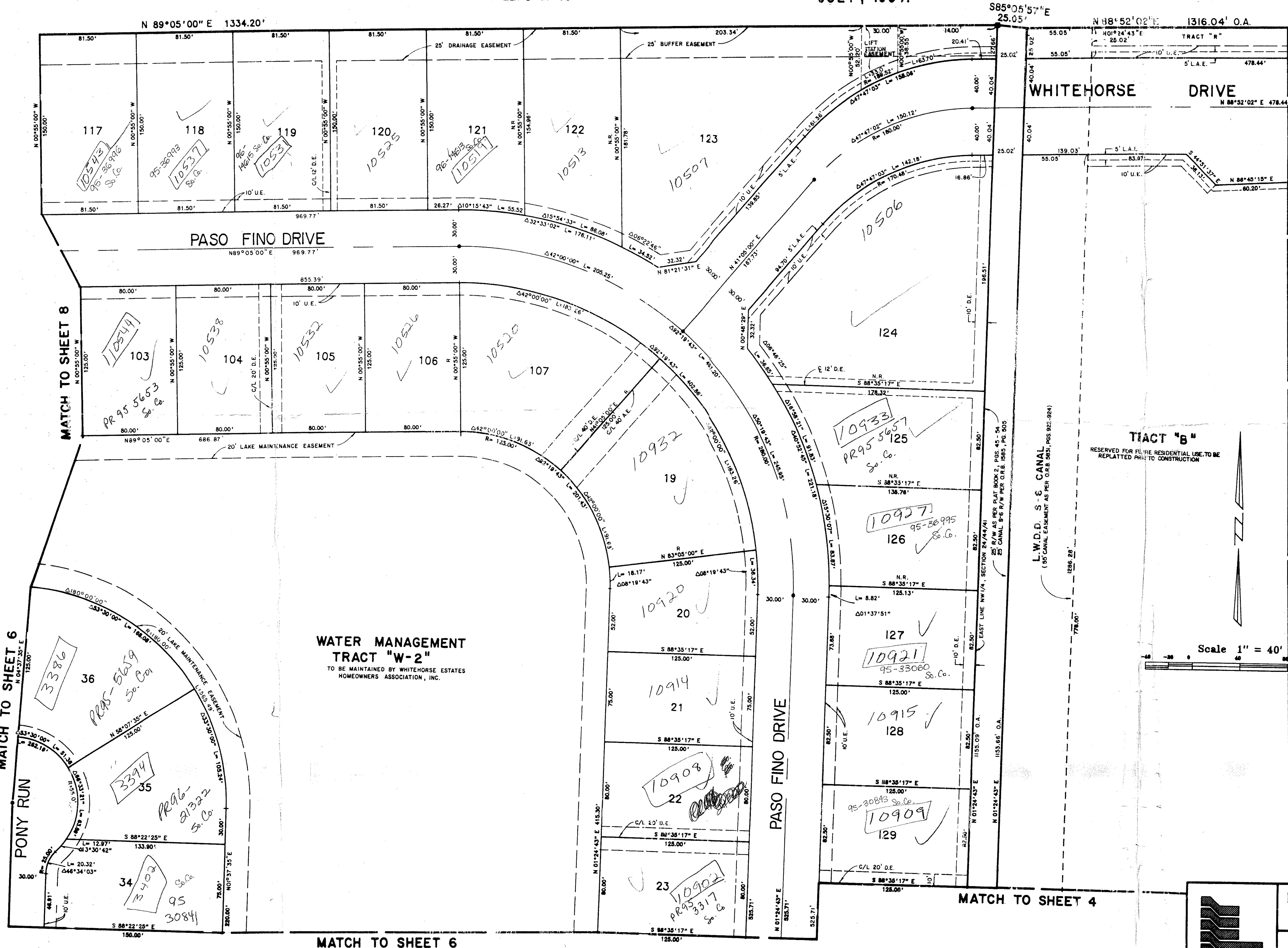
WHITEHORSE ESTATES

PALM VIEW LAKES
 A PLANNED UNIT DEVELOPMENT
 BEING A REPLAT OF A PORTION OF TRACTS 5 THRU 13 INCLUSIVE, BLOCK 26, PALM BEACH
 FARMS COMPANY PLAT NO. 3, PLAT BOOK 2, PAGES 45 THRU 54, INCLUSIVE, PUBLIC
 RECORDS OF PALM BEACH COUNTY, FLORIDA AND A PORTION OF THE NORTHWEST QUARTER
 OF SECTION 24, TOWNSHIP 44 SOUTH, RANGE 41 EAST, PALM BEACH COUNTY, FLORIDA.
 SHEET 5 OF 10

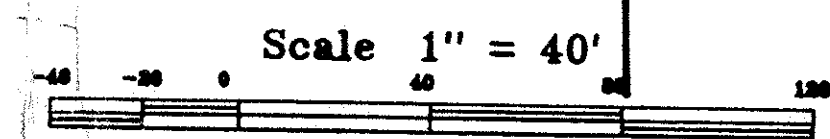
66

0517-001

STATE OF FLORIDA
 COUNTY OF PALM BEACH
 This Plat was filed for record at
 M. this day of 19
 and duly recorded in Plat Book No.
 on Page
 Dorothy H. Wilken, Clerk of the Circuit Court
 By D.C.



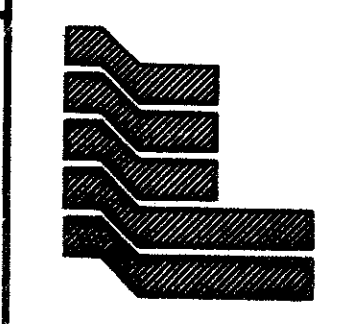
PET. 86-100A
 5/2/4/G



WHITEHORSE ESTATE
 73
 B
 63
 87-1041
 same
 72-736

0517-001

73/66



Landmark Surveying & Mapping Inc.
 1850 FOREST HILL BOULEVARD
 PH. (407)433-5405 SUITE 100 W.P.B. FLORIDA

WHITEHORSE ESTATES